



TAILOR ENERGY

Oil Tanks **Catalog**

Tanks | Separators | Casings | Trailers | Transfer Pump | Boot Washers

tailor-energy.com

03 Tanks

■ Stationary tanks	P.04
■ Dual purpose	P.18
■ Mobile	P.21
■ Underground	P.26

28 Separators

■ Aboveground	P.30
■ Underground	P.30

31 Others products

■ Filling Boxes	P.32
■ Tank accessories	P.34
■ Duplex transfer pump	P.40
■ Trailer	P.40
■ Boot Washer	P.40



The reservoirs



Stationary P. 04

Dual purpose P. 19

Mobile P. 21

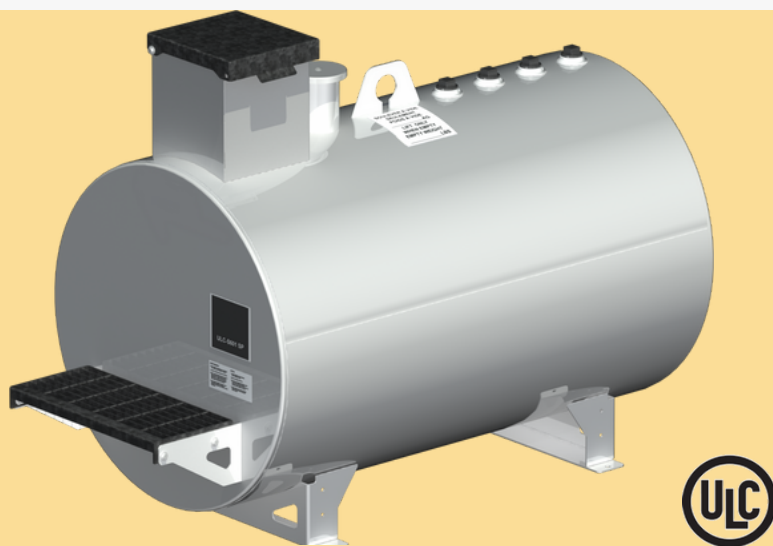
Underground P. 26



Our above-ground steel tanks are the most durable on the market. Their CAN/ULC-S601 certification meets all Canadian requirements for the supply of all flammable and combustible liquids. In addition to the classic, horizontal cylindrical format, we offer the vertical cylindrical format, which has the advantage of having a reduced footprint for tight spaces, and the rectangular format, which can only be made to measure according to your dimensions. The rectangular tank is therefore mainly intended to meet well-defined rectangular space requirements and is only manufactured to measure according to your dimensions. This tank is therefore mainly intended to meet well-defined space requirements.

Intended for outdoor installation, our tanks, with variable capacity, are all available to measure. The high quality of the tanks distributed by TAILOR ENERGY Inc. guarantees you the best possible storage security.





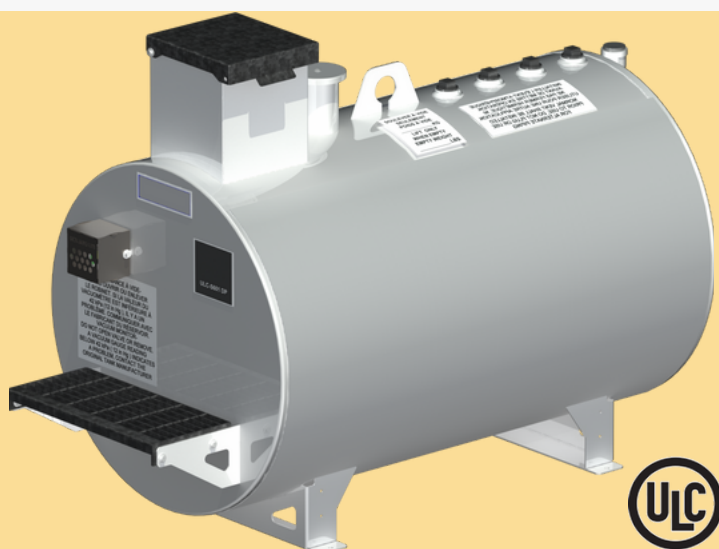
Horizontal Cylindrical Single Wall

- For flammable and combustible liquids
- Capacity up to 200,000 liters
- Also available in Double-bottom, Double-wall vacuum, Full containment or Retention basin
- Customizable capacity options.



Vertical Cylindrical Single Wall

- Capacity up to 175,000 liters
- For flammable and combustible liquids
- Single wall or double wall vacuum
- Customizable capacity options.



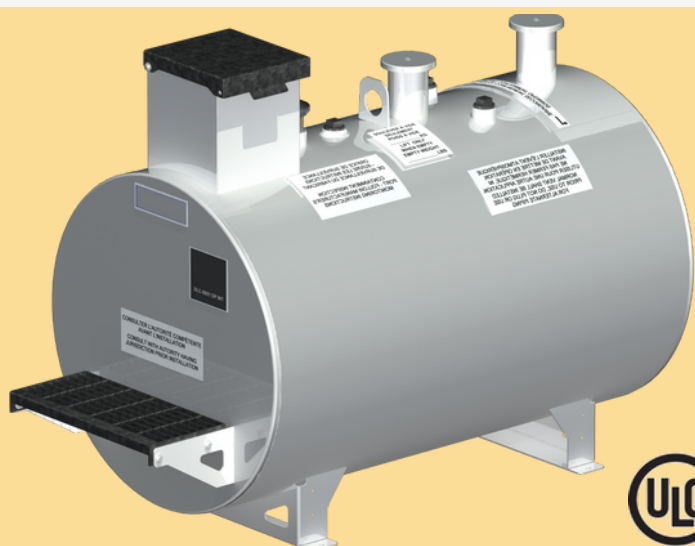
Horizontal Cylindrical Double Wall

- Capacity up to 200,000 liters
- For flammable and combustible liquids
- Also available in Single wall, Double bottom, Full containment or Retention basin
- Customizable capacity options.



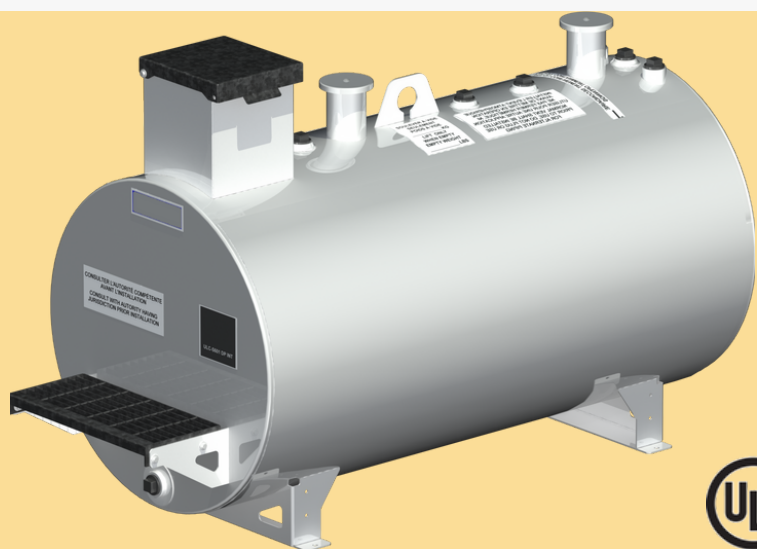
Vertical Cylindrical Double Wall

- Capacity up to 175,000 liters
- For flammable and combustible liquids
- Also available in Single wall
- Customizable capacity options.



Horizontal cylindrical Full containment 100%

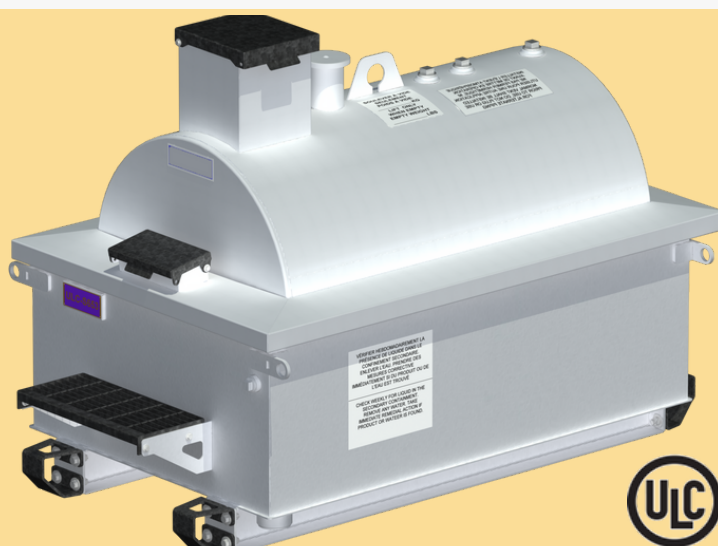
- Capacity up to 200,000 liters
- For flammable and combustible liquids
- Also available in Single wall, Double bottom, Double wall vacuum, Full containment 110% or Retention basin
- Customizable capacity options.



Horizontal cylindrical Full containment 110%

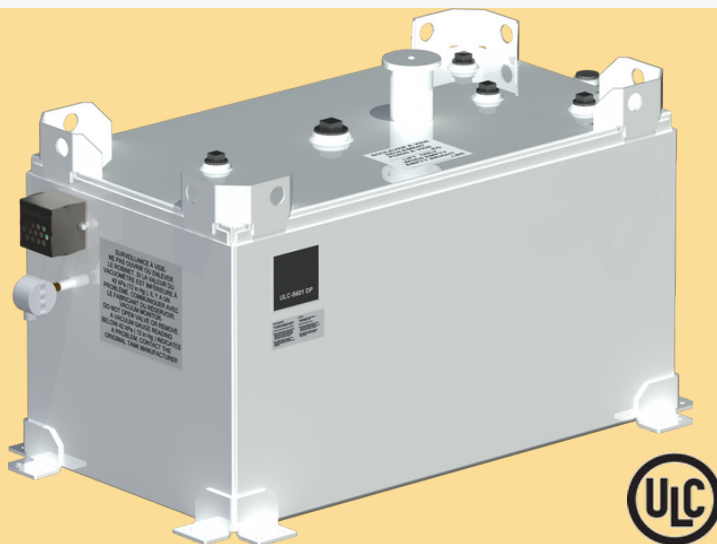
- Capacity up to 200,000 liters
- For flammable and combustible liquids
- Also available in Single wall, Double bottom, Double wall vacuum, 100% full containment or Retention basin
- Customizable capacity options.





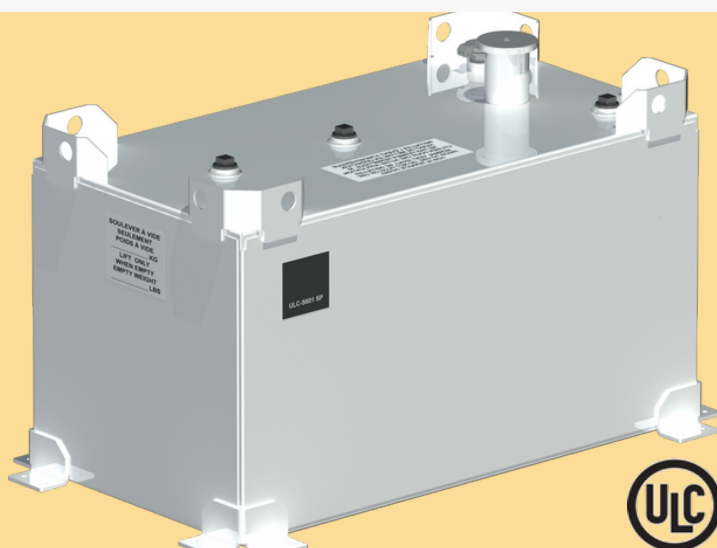
Horizontal cylindrical Retention basin 110%

- CAN/ULC-S601 & CAN/ULC-S653 certification
- Capacity up to 100,000 liters
- For flammable and combustible liquids
- Also available in Single Wall, Double Bottom, Double Wall Vacuum or Full Containment
- Customizable capacity options.



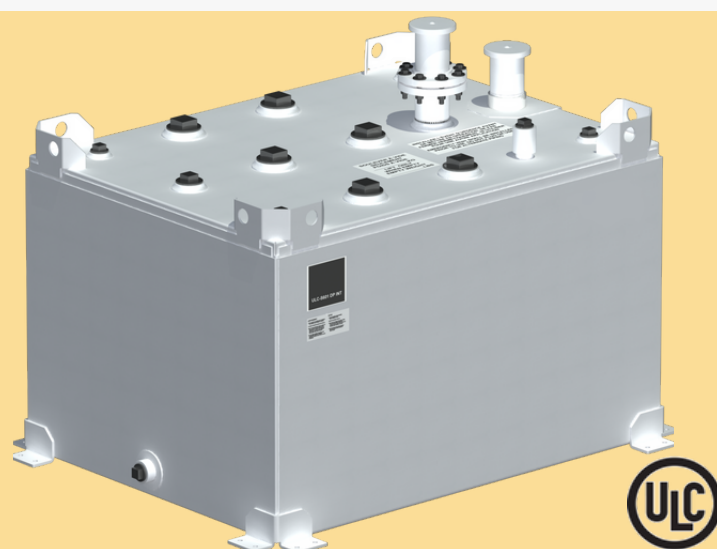
Rectangular Single Wall

- Capacity up to 100,000 liters
- For flammable and combustible liquids
- Also available in Double-wall vacuum or Full containment
- Customizable capacity options.



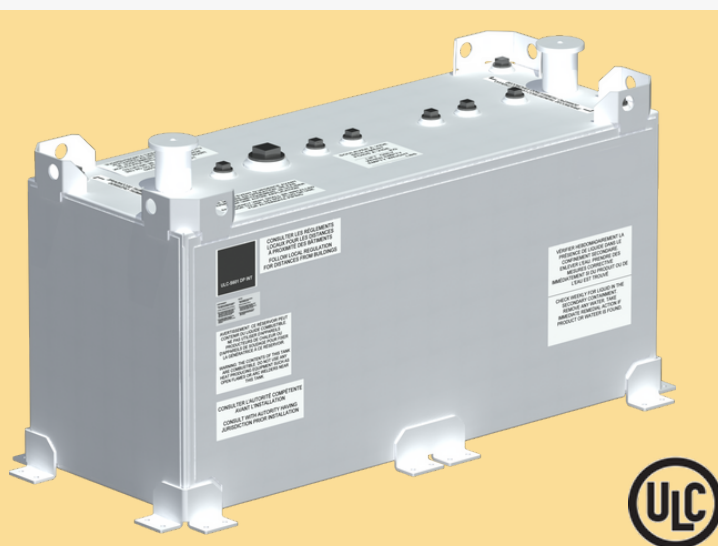
Rectangular Double Wall

- Capacity up to 100,000 liters
- For flammable and combustible liquids
- Also available in Single Wall or Full Containment
- Customizable capacity options.



Rectangular Full containment 100%

- Capacity up to 100,000 liters
- For flammable and combustible liquids
- Also available in Single wall, Double wall vacuum or full 110% containment
- Customizable capacity options.



Rectangular Full containment 110%

- Capacity up to 100,000 liters
- For flammable and combustible liquids
- Also available in Single wall, Double wall vacuum or 100% full containment
- Customizable capacity options.



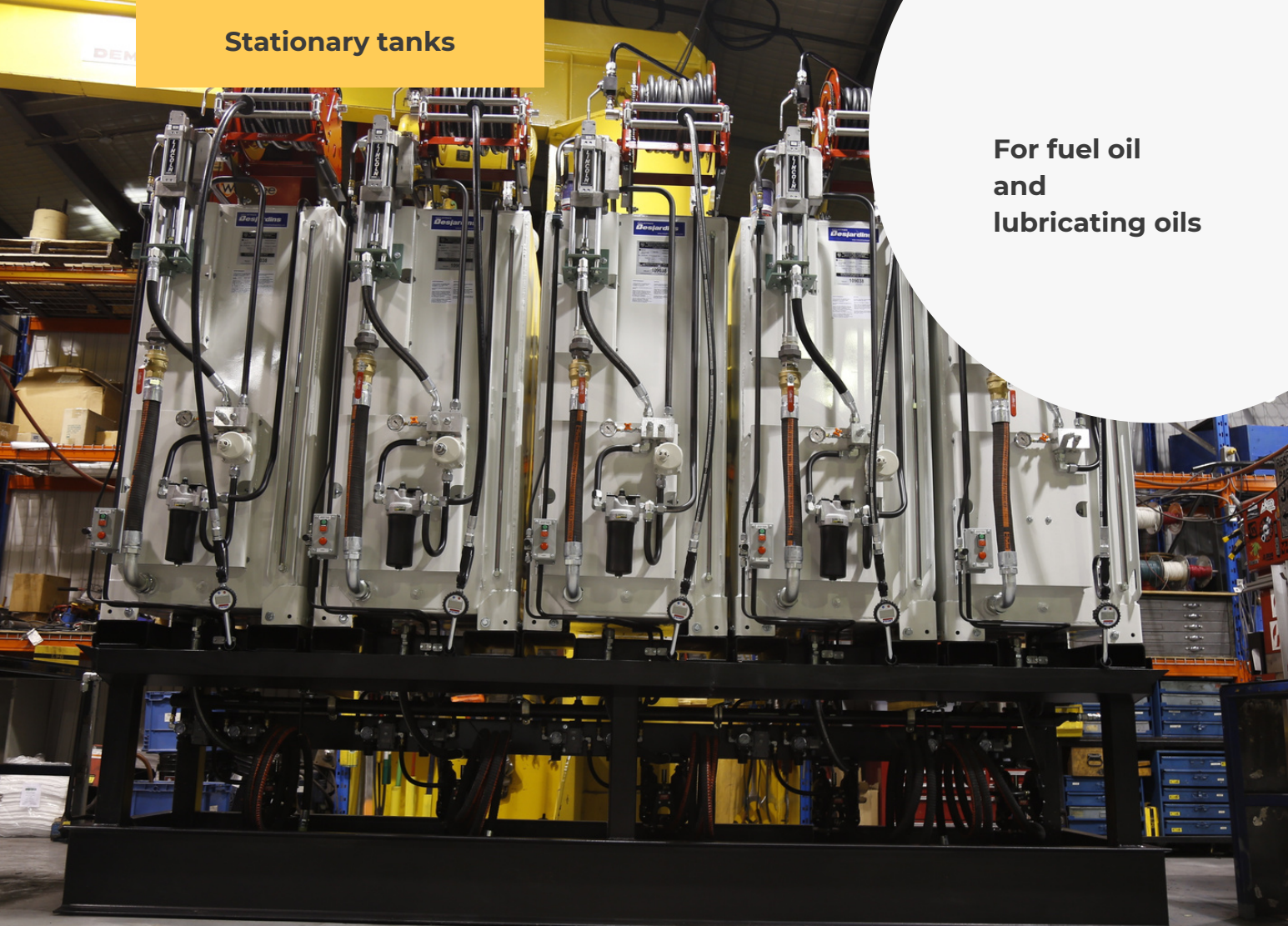
Double Wall Sub-Base for Generator

- Custom dimensions only. Capacity up to 50,000 liters (11,000 imperial gallons). Number and type of openings specified per customer.
- Atmospheric vents and emergency vents included.
- Model number: R8109

Double wall without the disadvantages of vacuuming or with basin. Superior reliability to models with secondary vacuum confinement. Simplified maintenance: no gauge to replace, no vacuum to restore. Intended to be installed outdoors.

Stationary tanks

For fuel oil
and
lubricating oils



Our horizontal and vertical cylindrical tanks are the most durable on the market. Their CAN/ULC-S602 certification meets all Canadian requirements for diesel generator power, for oil heater power or simply for storing your lubricating oils. The vertical configuration has the advantage of having a reduced footprint for tight spaces. In addition to our cylindrical and oblong tanks, we offer a rectangular configuration which can only be made to measure according to your dimensions. This tank is therefore mainly intended to meet well-defined space requirements. Whether your installation is indoors or outdoors, the high quality of our tanks ensures the best possible storage security.





Horizontal Cylindrical Single Wall

- Capacity up to 2500 liters
- For fuel oil and lubricating oils
- Also available in double bottom, double vacuum wall, 100% full containment, 110% full containment or retention basin
- Customizable capacity options.



Double fond



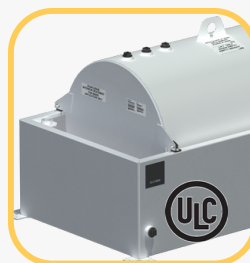
Double sided



**Full
containment
100%**



**Full
containment
110%**



**Retention
basin 110%**



Vertical Cylindrical Single Wall

- Capacity up to 2500 liters
- For fuel oil and lubricating oils
- Also available in double bottom, double vacuum wall and 110% retention basin
- Customizable capacity options.



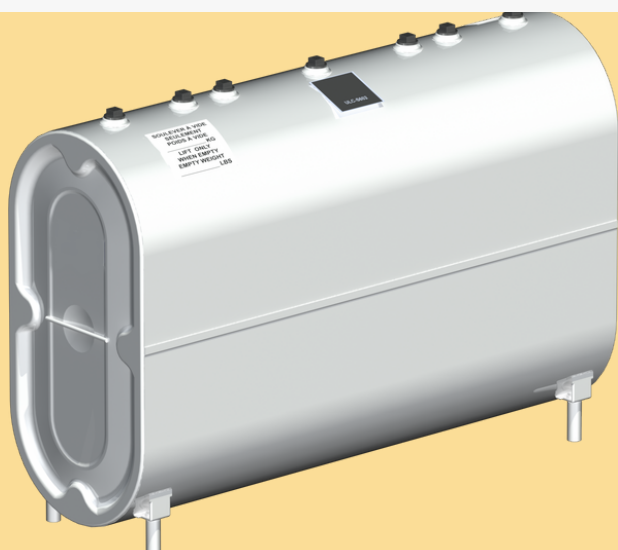
Double fond



Double sided



**Retention
basin 110%**



Oblong Single Wall

- Capacity up to 2500 liters
- For fuel oil and lubricating oils
- Also available in double bottom, double vacuum wall, 100% full containment, 110% full containment or retention basin
- Customizable capacity options.



Double fond



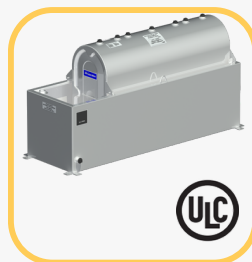
Double sided



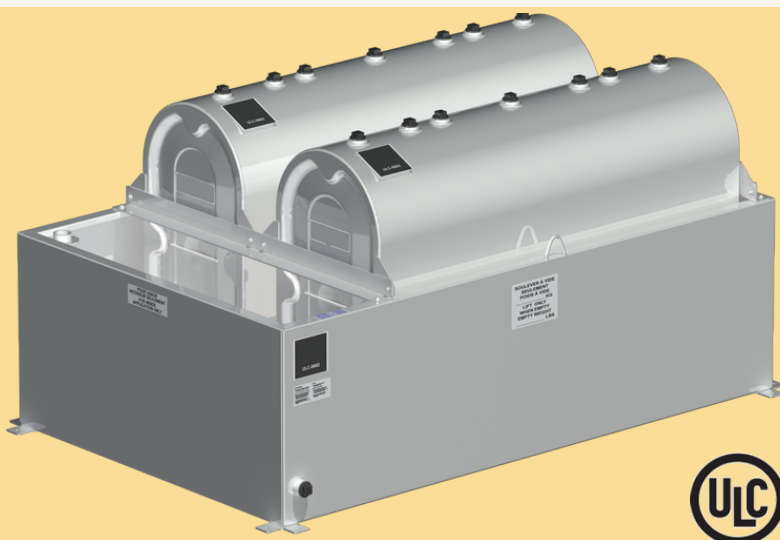
**Full containment
100%**



**Full containment
110%**



**Retention
basin 110%**



Oblong Retention basin 110 %

- Capacity up to 2400 liters
- For fuel oil and lubricating oils
- Also available in 110% rear retention basin
- Customizable capacity options.



**110% rear
retention basin**



Rectangular Single Wall

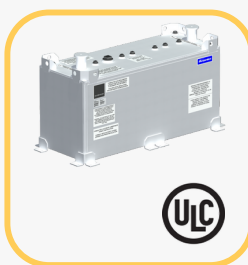
- Capacity up to 2500 liters
- For fuel oil and lubricating oils
- Also available in double bottom, double vacuum wall, full containment 100%, full containment 110%
- Customizable capacity options.



Double fond



Double sided



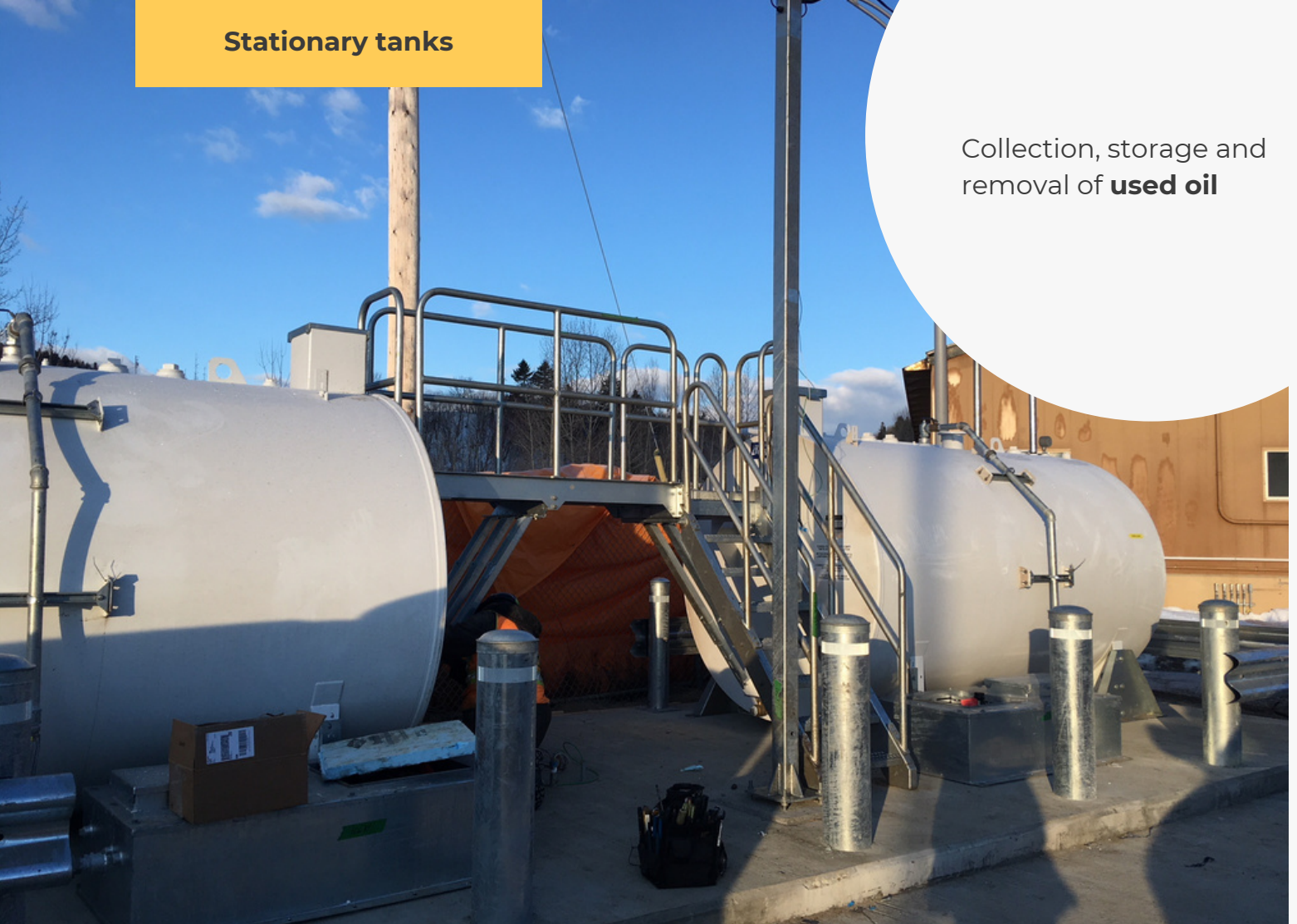
Full containment 100%



Full containment 110%

Stationary tanks

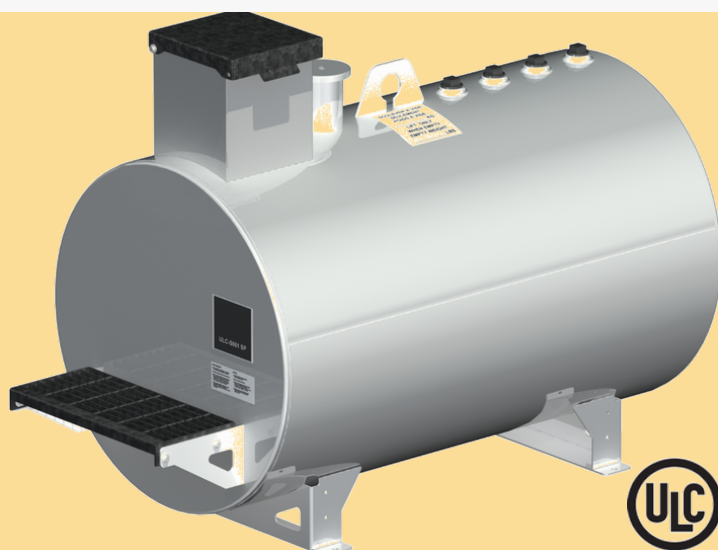
Collection, storage and removal of **used oil**



Their CAN/ULC-S652 certification meets all Canadian requirements for the storage of used oils.

For outdoor installation. The high quality of the horizontal cylindrical tanks distributed by TAILOR ENERGY Inc. guarantees you the best possible storage security.





Cylindrical Single Wall

- Capacity up to 50,000 liters
- For storing used oils
- Also available in double-wall vacuum, full containment 100%, full containment 110%, retention basin 110%
- Customizable capacity options.



Double sided



**Full
containment
100%**



**Full
containment
110%**



**Retention
basin 110%**

The iD-Cube tanks distributed by TAILOR ENERGY Inc. are the most versatile on the market. Whether for refueling or for generator power, whether your installation is indoors or outdoors and whether your use is fixed or mobile, iD-Cube tanks will meet all your needs.

The unique design with dual CAN/ULC-S601 & CAN/CGSB 43.146 certification as well as its CAN/ULC-S663 certified filling box allow the iD-Cube to meet all Canadian requirements for fuel storage and transportation.

In addition, their double-walled construction allows you to add an electronic leak detection system to replace the visual leak detector supplied as standard. Our iD-Cube tanks are therefore your first choice for all your fuel storage needs.

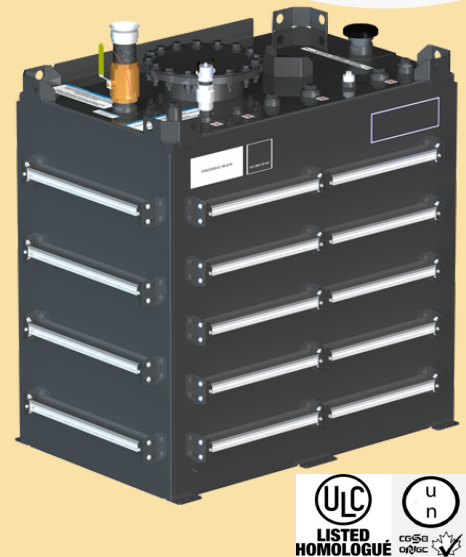
ID-Cube



- Meets Canadian CSA B138 & B139 regulations for oil combustion appliances
- Double-walled CAN/ULC-S601 certification for fixed use
- Double-walled CAN/CGSB 43.146 certification for mobile use
- CAN/ULC-S663 certified filler box
- Padlockable vandal-proof protection cabinet to cover all equipment
- Possibility of installing a pump with meter inside the cabinet
- Sufficient openings for generator supply/return
- Openings accessible from outside the cabinet for remote filling and ventilation
- Durable exterior epoxy coating
- Fork holes on both sides for handling the full tank with a forklift
- Lifting eyes at 4 corners allowing handling of the full tank with a sling
- Galvanized steel frame allowing up to 3 full tanks to be stacked
- Visual leak detector offered as standard

Whether for refueling or for generator power, whether your installation is indoors or outdoors and whether your use is fixed or mobile, our double certified tanks will meet all your needs.

The unique dual-certified CAN/ULC-S601 & CAN/CGSB 43.146 design will meet all Canadian requirements for fuel storage and transportation. This model, manufactured exclusively to measure, will be adapted according to your constraints.



- Meets Canadian CSA B138 & B139 regulations for oil combustion appliances
- Double-walled CAN/ULC-S601 certification for fixed use
- Double-walled CAN/CGSB 43.146 certification for mobile use
- Sufficient openings for generator supply/return
- Durable exterior epoxy coating
- Lifting eyes at 4 corners allowing handling of the full tank with a sling
- Available to measure up to 5000 liters

UNDER DOUBLE WALL BASE

Whether your generator installation is indoors or outdoors and whether your use is fixed or mobile, our double certified tanks will respond to all situations. The unique design with dual CAN/ULC-S601 & CAN/CGSB 43.146 certification will meet all Canadian requirements.

This model, manufactured exclusively to measure, will be adapted according to your constraints.



- Meets Canadian CSA B138 & B139 regulations for oil combustion appliances
- Double-walled CAN/ULC-S601 certification for fixed use
- Double-walled CAN/CGSB-43.146 certification for mobile use
- Sufficient openings for generator supply/return
- Durable exterior epoxy coating
- Lifting eyes at 4 corners allowing handling of the tank with the generator
- Available to measure up to 5000 liters

Mobile tanks

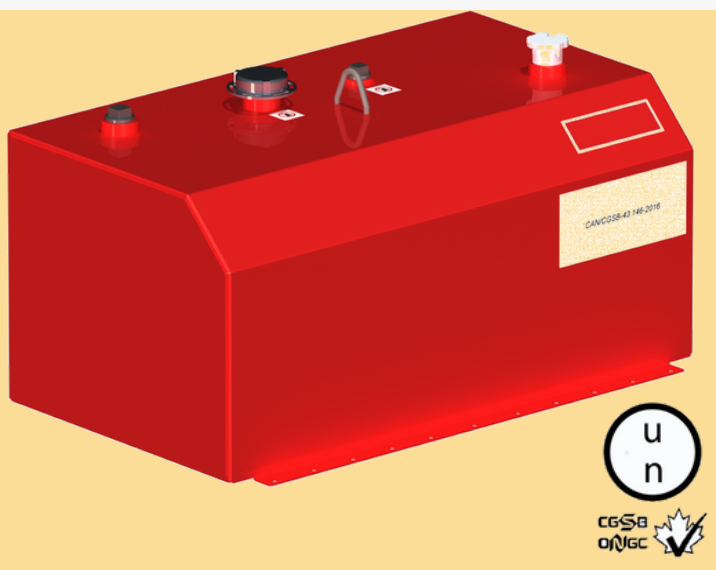
**Flammable and
combustible liquids**



Mobile tanks with a capacity of more than 450 liters for diesel and 30 liters for gasoline must bear the UN or CAN/CGSB-43 label. 146-2002. In addition, an inspection must be carried out every 60 months by the competent authorities. The driver of a vehicle transporting a tank of more than 2,000 liters or a trailer of more than 450 liters must hold a permit to transport dangerous materials.

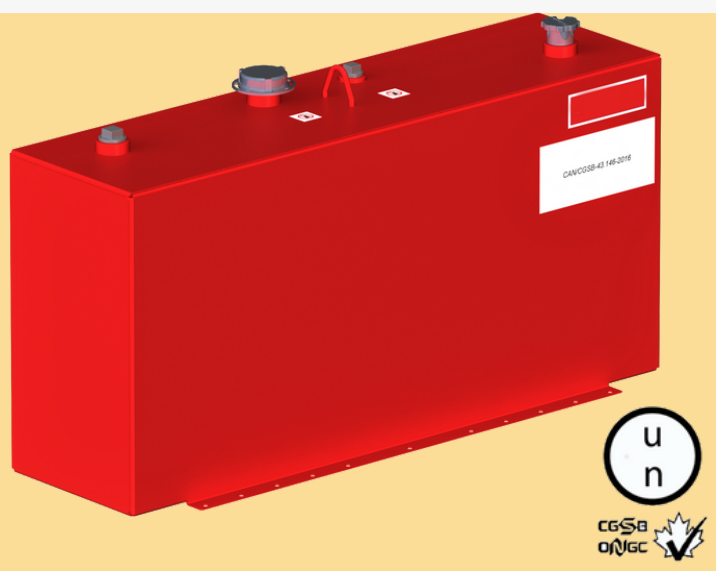
All of our portable steel tanks are designed and manufactured in compliance with the CAN/CGSB-43 standard. 146 and comply with international standard UN 31 A/Y. Quality assured by an ISO 9001:2015 system





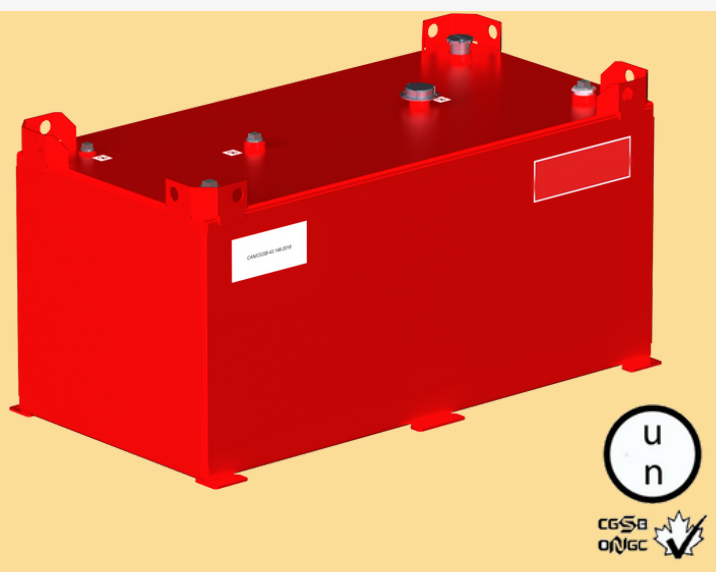
Type A for the transport of dangerous goods (0-1000L)

- Capacity up to 1,000 liters
- Made from 11 gauge (3mm) steel
- The pump can be installed on the left or right of the tank
- Comes with a padlockable cap and atmospheric vent
- Available in single wall and double wall



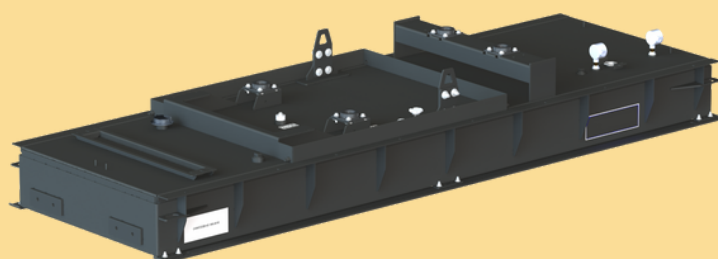
Type B for the transport of dangerous goods (0-450L)

- Capacity up to 450 liters
- Made from 11 gauge steel (3 mm)
- The pump can be installed on the left or right of the tank
- Comes with a padlockable cap and atmospheric vent
- Available in rectangular single wall and double wall



Type C&D for the transport of dangerous goods (1000-5000L)

- Capacity up to 5,000 liters
- Made from 1/4" (6 mm) steel
- The pump can be installed on the left or right of the tank
- Delivered with a padlockable cap and an atmospheric vent
- Available in rectangular single wall and double wall



Mobile steel sub-base tanks for flammable and combustible liquids

- A mobile sub-base tank for generator
- Custom dimensions only

DT-Mobile Diesel tank in polyethylene



- ***FOR DIESEL ONLY***
- Choice of capacities 210 liters or 440 liters
- 12VDC pump
- Hose 19 mm (3/4 in.) x 4 m (12 feet)
- Automatic trigger gun
- The 210 liter model fits under a tonneau cover



The DT-Mobile DIESEL tanks distributed by TAILOR ENERGY Inc. are the lightest on the market.

Their molded polyethylene construction allows for the integration of a box to store the hose, gun and power cable. Molded clearances under the tank allow you to handle the full tank using a forklift.

Eyelets are also integrated into the sides of the tank for secure docking. The very low profile of the 210 liter model offers the particularity of being able to be transported under your tonneau cover. Meets the European ADR standard (Regulatory body for the transport of dangerous materials).

Urea tank (FED) Blue-Mobile



- Choice of capacities 210 liters or 440 liters
- Submersible pump 30 liters/minute 12VDC
- Hose 19 mm (3/4 in.) x 4 m (12 feet)
- Automatic trigger gun



Blue-Mobile UREA (DEF) tanks distributed by TAILOR ENERGY Inc. are the lightest on the market. Their manufacture in molded polyethylene resistant to Urea allows the integration of a box to store the hose, gun and power cable.

The submersible pump installed as standard in Blue-Mobile tanks ensures reliability and is much quieter than suction pumps.

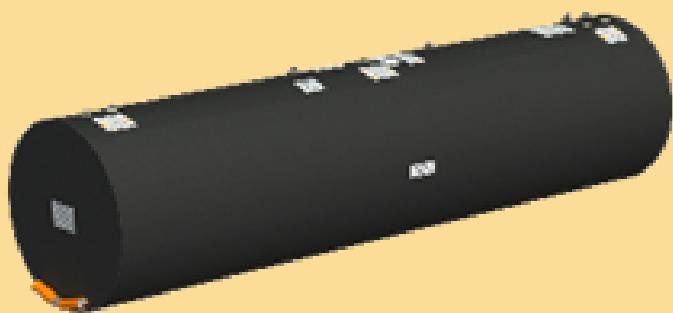
Molded clearances under the tank allow you to handle the full tank using a forklift.

Meets the European ADR standard (Regulatory body for the transport of dangerous materials).



The underground tanks distributed by TAILOR ENERGY Inc. are the most durable on the market. Their CAN/ULC-S603 certification meets all Canadian requirements for the supply of all types of petroleum products. The high quality of our steel tanks guarantees you the best possible storage security. Underground tanks are treated against corrosion using a product applied directly to metal surfaces in a single coat and which provides long-term resistance against corrosive environments and soil stress.





Underground steel tanks for flammable and combustible liquids

- Capacity up to 175,000 liters
- For flammable and combustible liquids
- Single wall or double wall vacuum
- Customizable capacity options.

The Separators



Aboveground P. 30

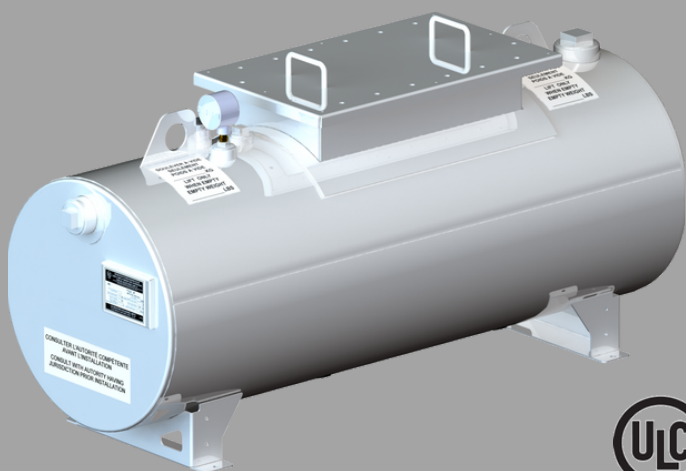
Underground P. 30



Our oil-water separators are the only steel separators in the world to be certified to the CAN/ULC-S656 standard. In addition, this manufacturing standard for water/oil separators is the only certification that is recognized by authorities having jurisdiction throughout Canada. Our oil-water separators offer the best hydrocarbon-in-water separation performance on the market. Although the CAN/ULC-S656 standard only requires performance below 15PPM at the outlet, ULC certification tests revealed to us a hydrocarbon level in the water well below 5PPM for an influent of 2000PPM. Our water-oil separators are therefore your logical choice for all your mechanical workshop, car wash, parking lot, gas station, oil depot or other installations.

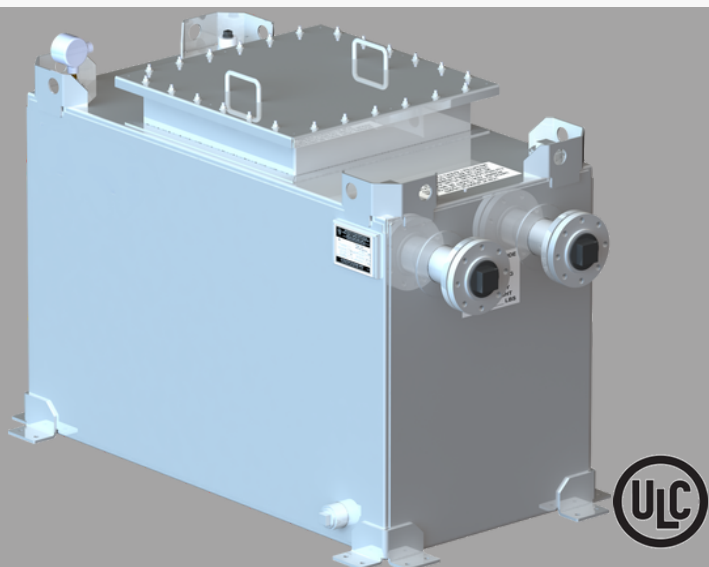
- Separates from water all hydrocarbons with a specific gravity between 0.82 and 0.88
- Possible configuration for underground installation
- All models are available single or double walled
- Durable Epoxy coating inside and outside of the separator
- Water treatment flow rate up to 1000 Imperial gallons per minute
- Filter module easy to remove, clean and infinitely reusable
- Solids accumulation chamber





Above ground - Cylindrical Single Wall

- Available in cylindrical double wall
- Customizable capacity options.



Above ground - Rectangular Single Wall

- Available in rectangular double wall
- Customizable capacity options.



Underground - Horizontal Cylindrical Single Wall

- Available in cylindrical double wall
- Customizable capacity options.

Others products



Filling Boxes P. 32

Tank accessories P. 34

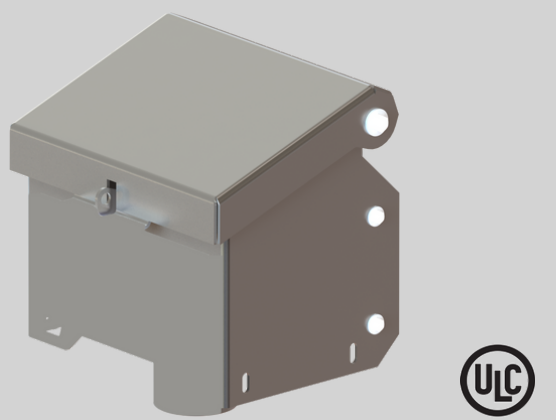
Duplex transfer pump P. 41

Trailer P. 41

Boot Washer P. 41

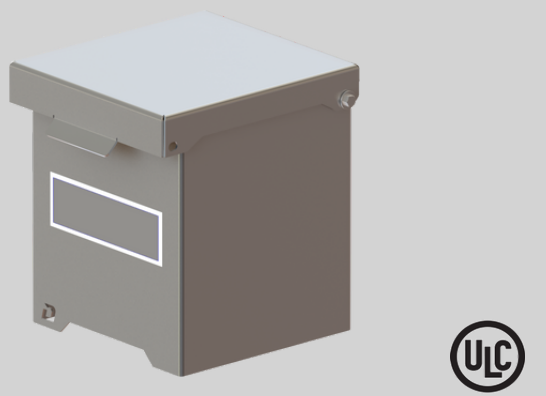


Spill boxes distributed by TAILOR ENERGY Inc. are designed to prevent the risk of spills on the ground during filling or emptying operations of your tank. With the possibility of being installed directly on the tank or for remote filling, all our spill boxes are certified according to the CAN/ULC-S663 standard in order to meet the installation standards in force across Canada.



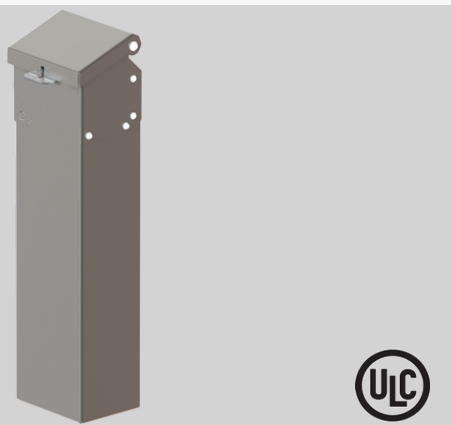
Wall Mount Fill Box

- Stainless 304 or painted steel
- Without piping cover
- Female mounting NPT 2 in. or 3 in.
- Drain valve included



Threaded spill box

- Stainless 304 or painted steel
- Female mounting NPT 2 in. or 3 in.
- Drain valve included



Wall mount fill box with piping cover

- Stainless 304 or painted steel
- Female mounting NPT 2 in. or 3 in.
- Drain valve included



Recessed filling box

- Stainless 304



Discover our range of manual and electric pumps



GPI #HP100 manual diaphragm pump, flow rate 189L (50G) / per 100 strokes, 3/4" x 8 ft hose

The GPI HP-100 Fuel Transfer Pump is a premium quality, reliable and versatile manual fuel piston pump.

This hand pump features a Dual-Flo piston design that pumps fluid on both the push stroke and pull stroke, delivering a flow rate of 189 liters per 100 strokes - the highest flow rate in the industry year after year.



GPI electric pump #M-150S-AU (R666R-2-00), 12 volts, flow rate 57L/min (15GPM), 3/4" automatic gun, 3/4"x12ft hose, telescopic suction hose (15" @ 40") included

The GPI M-150S Fuel Transfer Pump is the #1 retail fuel transfer pump, delivering longer run times and award-winning performance year after year. Providing flow rates up to 15 GPM (57 L/min), the M-150 Series is the pump of choice for agricultural, automotive and construction applications dispensing gasoline, diesel fuel and kerosene.

Whether you're working your crops, preparing for your next errand, or refueling your mower fleet, our M-150 provides reliable flow rates with minimal downtime.



GPI electric pump #G20-012AD (R666S-2-00), 12 volts, 76LPM (20GPM), 1" automatic gun, 1"x14ft hose, telescopic suction hose (15" @ 40") included

The GPI G20 Series Fuel Transfer Pump is the first gear pump to deliver TRUE 20 GPM. Providing flow rates of up to 20 GPM (76 L/min), the G20 is the premier pump in GPI's G Series. Its innovative new design features simplified connection points that make attaching accessories quick and easy, and its unique rotating gear design ensures long product life with minimal maintenance.

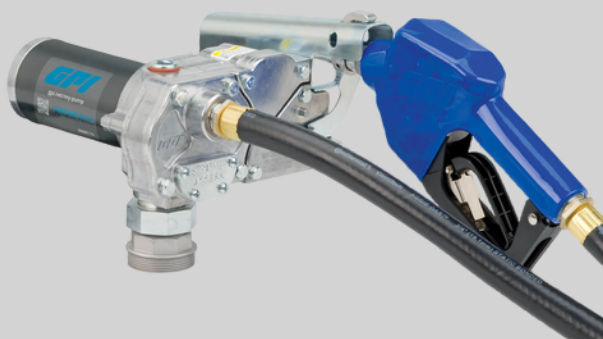
The G20 is durable, made from high quality die-cast aluminum, easy to use and built to last, with a self-priming rotating gear design.



GPI electric pump #V25-012AD (R666T-2-00), 12 volts, 95LPM (25GPM), 1" automatic gun, 1"x18ft hose, telescopic suction hose (15" @ 40") included

The GPRO V25 series is the next generation modular vane pump. The V25 is designed to deliver consistent high-pressure performance from a rugged, heavy-duty modular vane pump. 12V DC motor provides up to 25 GPM (94 L/min). It's fast and flexible; capable of loading up to 750 gallons of fuel without interruption, with a modular quick-mount system (4 bolts and an O-ring) that allows for easy, leak-free attachment.

Whether your business is farming, construction or fleet management, refueling is essential and should be a quick and reliable process.



GPI electric pump #M-1115S-AU (R666U-2-00), 110 volts, 45L/min (12GPM), 3/4" automatic gun, 3/4"x12ft hose, telescopic suction hose (15" @ 40") included

The GPI M-1115 Series Fuel Transfer Pump is the pump of choice for fixed locations in vehicle fleets, agriculture or industrial applications. Install the M-1115S on your fuel tanks for reliable fueling with minimal maintenance. It will be by your side to keep your trucks on the road, your tractor working in the fields, or your skid steer loader moving until the job is done. The series is ideal for dispensing gasoline, diesel fuel and kerosene.

Providing flow rates up to 12 GPM (45 L/min), the M-1115 Series features a self-priming rotating gear, 115 VAC motor and lightweight cast aluminum body which resists corrosion. This model comes with a rotating collar bracket for easy installation and orientation of the pump.



GPI electric pump #PRO20-115AD (R663Q-3-00), 110 volts, 76LPM (20GPM), 1" automatic gun, 1"x18ft hose, suction hose not included

The GPRO PRO20-115 professional grade fuel transfer pump is the pump of choice for agricultural and construction applications with low viscosity petroleum fuels such as gasoline, diesel and kerosene providing flow rates of up to 20 GPM (76 L/min). The PRO20-115 is excellent for keeping your fleet moving, your skidder pulling logs or your excavator digging.



GPI electric pump #PRO35-115AD (R663P-3-00), 110 volts, 132LPM (35GPM), 1" automatic gun, 1"x18ft hose, suction hose not included

The GPRO PRO35-115 professional grade fuel transfer pump is the pump of choice for your large stationary fuel tanks. This powerful pump will quickly and easily fill even the largest fuel tanks so you can get back to clearing debris, planting crops, or stacking wood. The 115 V AC motor provides flow rates up to 35 GPM (132 L/min) for applications with low viscosity petroleum fuels such as gasoline, diesel and kerosene.



GPI electric pump #PRO20-115 (R663P-3-00), 110 volts, 132LPM (35GPM), 1" automatic gun, 1"x18ft hose, suction hose not included

The GPRO PRO20-115 professional grade fuel transfer pump is the pump of choice for agricultural and construction applications with low viscosity petroleum fuels such as gasoline, diesel and kerosene providing flow rates of up to at 20 GPM (76 L/min). The PRO20-115 is excellent for keeping your fleet moving, your skidder pulling logs or your excavator digging.



GPI electric pump #PRO35-115AD/QM150L8N (R663P-4-00), 110 volts, 132LPM (35GPM) with QM150 meter, liter display, 1" automatic gun, 1"x18pds hose, suction hose not included

The GPRO PRO35-115 professional grade fuel transfer pump is the pump of choice for your large stationary fuel tanks.

This powerful pump will quickly and easily fill even the largest fuel tanks so you can get back to clearing debris, planting crops, or stacking wood.

The 115 V AC motor provides flow rates up to 35 GPM (132 L/min) for applications with low viscosity petroleum fuels such as gasoline, diesel and kerosene.

Transfer Pump
Boot Washer
Trailer



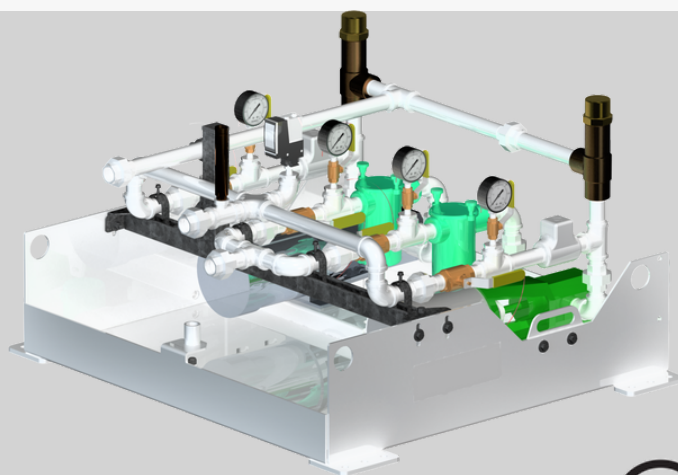
Find our accessories that accompany you every day.



Mobile tank trailers

All of our mobile tanks can be installed on a custom-made trailer. We deliver a turnkey product, labeled, plated and registered for the road.

Our representatives will be happy to answer your questions in more detail.



Duplex transfer pump

Our representatives will be happy to answer your questions in more detail.



Boot washers

Boot cleaners made from high-quality, aging-resistant polyethylene. The piping is entirely stainless steel, the fixed brushes leave nothing to chance and allow thorough cleaning.



TAILOR ENERGY

For more information, contact us :



+1 514 419 3900



infos@tailor-energy.com



www.tailor-energy.com